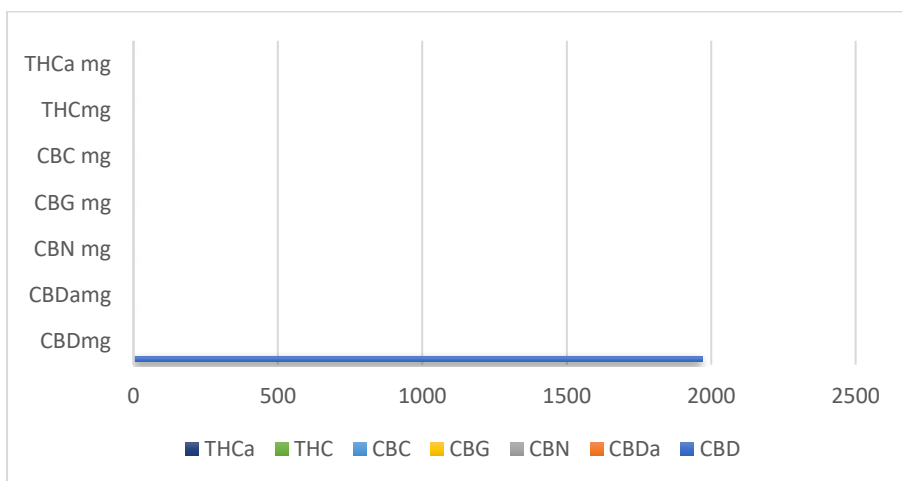


Receipt:	Date of Report: 02.09.2020	Report No: ALCBD1766F
Customer: - AddCBD		
Address: - Unit 1 Fountain Enterprise Park, Enterprise Road, Maidstone, Kent. ME15 6ZQ		
Sample: AddCBD Cosmetic Enhancer (2000mg)	Batch No: 17038-5	
Angela Leach Approved Signatory Technical Director <i>ALeach</i>	Comments:	



Requirements for CBD Oil	Results mg	Result mg	LOQ	Test Method	Units
THCa		0	0.0025%	In-House Method	mg / g / %
THC		0	0.0025%	In-House Method	mg / g / %
CBC		0	0.0025%	In-House Method	mg / g / %
CBG		0	0.0025%	In-House Method	mg / g / %
CBN		0	0.0025%	In-House Method	mg / g / %
CBDa		0	0.0025%	In-House Method	mg / g / %
CBD		1968.92	0.0025%	In-House Method	mg / g / %
Total Cannabinoids		1968.92		In-House Method	mg / g / %
<b>Appearance – Free from visual mould, mildew, and foreign matter.</b>		<b>None Detected</b>			

FINAL APPROVAL DATE: 02.09.2020 APPROVED: *ALeach* A.LEACH TECHNICAL DIRECTOR

Testing results are based solely upon the sample submitted to AL-BIOSERVICES LTD, in the condition received. AL-BIOSERVICES LTD warrants that all analytical work is conducted professionally in accordance with all applicable standard laboratory using validated methods. Data was generated using an unbroken chain of comparison to NIST traceable Reference Standards and Certified Reference Materials. This report may not be reproduced, except in full, without the written approval of AL-BIOSERVICES LTD

TECHNICAL CENTRE:- TOPLEY HOUSE, OFFICE SUITE 7, 52 WASH LANE, BURY, LANCS. BL9 6AS

Tel:- 0161 764 9221 / 07760760346.

[www.al-bioservices.co.uk](http://www.al-bioservices.co.uk), al-bioservices@hotmail.co.uk